

LETS



Law Enforcement Traffic System – MUCR 2024 Compliant

REJIS



LETS5 is developed in partnership with the Highway Safety Division of the Missouri Department of Transportation to support Missouri law enforcement agencies management of crash reports. Available over a secure internet connection, LETS is a powerful field and administrative tool with customized functions that address local requirements, crash diagramming, and GPS mapping of crash coordinates. Interfaced with Missouri Department of Revenue, officers enjoy retrieval of driver and vehicle registration information. Export portal is agency controlled to upload approved reports to RMS, and third-party internet report sites like Carfax.

The REJIS Commission is a government partner created to “serve the public interest through delivering quality, cost-effective technology services to the justice community and to government and quasi-government agencies.” REJIS provides CJIS secure WAN/LAN connection services, data record management, data center collocation, and record management applications to law enforcement, prosecutors, and corrections agencies at the local, state and federal levels.

REJIS services include:

- Development of custom applications
- Installation and support of custom and commercially available software
- Custom interfaces
- IT Support Service
- Data center outsourcing
- Network, training and help desk support
- Information Security & Advisory Services

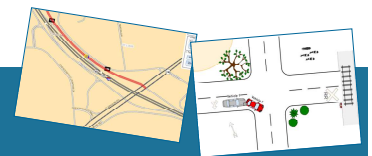
REJIS has approximately 140 employees located at three sites. Most of the staff and equipment are based at the REJIS building, in the Central West End of St. Louis.

For additional information on REJIS services, contact your REJIS Client Services Representative or the REJIS Help Desk (314-535-9497 or 1-888-923-7255).

01/2025

Benefits and Features

No Cost: LETS application installation, utilization, and maintenance are provided at no cost to a participating agency courtesy of a grant administered by MoDOT. Interfaces, help desk support, and training are also free. Computer terminal equipment and communications circuits, including charges for wireless service if used and Internet service, are the responsibility of the participating agency.



Customized use:

- Agency assigned User ID.
- Local administrators maintain information that is specific to the agency’s jurisdiction such as commonly used insurance and towing companies.
- Agency sets report number formats and report approval protocols.
- Integrated location mapping system to pinpoint crashes and populate longitude and latitude into the crash report.
- Integrated crash diagramming.
- LETS5 is accessible over public internet. Application is secured through industry standard practices.

Data security and use: Data collected as part of the LETS application are stored in the REJIS data center, a modern facility rated as a tier 2 data center. The data are owned by the reporting agency and they retain control over the use of and access to the data.

Reporting: Reports can be printed from an agency’s LETS data. Other reports can be generated to identify problem areas, effectiveness of enforcement activities, general enforcement activity, support of budget requests, and respond to citizen complaints.

Administrative efficiency:

- Supported by electronic transmission of crash report and diagrams to the MSHP (MOCARS), an agency does not require clerical hours for copying and mailing reports to MOCARS.
- With built-in edits, accurate and complete data is collected, deleting time spent on paper reports and resending to MOCARS.

Training: Training conducted by the REJIS Commission is focused on LETS administrator functions. Initially, as part of the set-up process, the agency will be contacted to schedule administrator training. Typically, non-administrator users do not need any special instruction before using LETS. Also, REJIS provides dedicated responsive support for LETS via their 24/7 Help Desk.

LETS Sign Up Procedure

The sign-up procedure for the LETS program is simple and straight forward. Complete the LETS Agency Enrollment Form and submit it to REJIS. The form can be found on the REJIS website at the following address:

<https://www.rejis.org/wp-content/uploads/2018/11/LETSEnrollmentForm.pdf>

Upon receipt REJIS will initiate the necessary action to enroll the agency, assist in downloading the application and schedule training for the agency's LETS administrator. Once trained the LETS administrator defines other members of the agency to the LETS application, assigns User IDs and access rights, and report approval protocol. The administrator also updates code tables and completes any other customization that may be desired.

Complete Agency Control

Each agency is responsible for loading unique agency information into their personal LETS application. Officers and other automatically populated fields are initially entered by an agency administrator. The administrator attends the free LETS training class to learn the process. After the required information is entered, anyone at the agency can enter and submit crash reports.

Getting Started?

For a free demonstration of LETS at your agency, contact a LETS representative. Although helpful, an agency administrator does not need to be registered prior to a demonstration. For information regarding enrollment in LETS or to forward an enrollment form, contact the REJIS Help Desk.

Questions?

Contact kkarl@rejis.org or the REJIS Help Desk for additional information.